

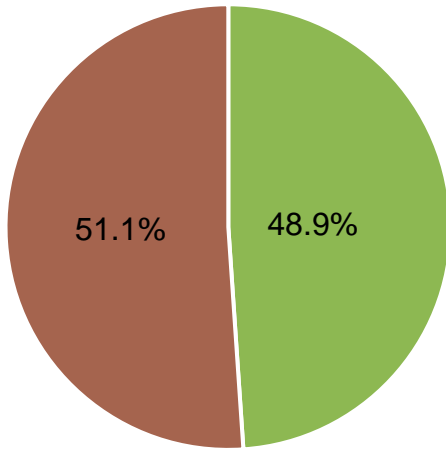
2021 Hillsborough County Health Profile

Community Demographics in 2019

1,445,243

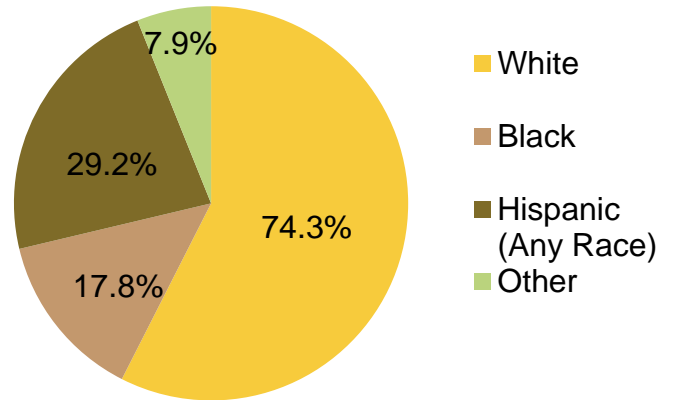
people living in Hillsborough County¹

Population by Gender¹



■ Male ■ Female

Hillsborough County Population, By Race/Ethnicity, 2019¹

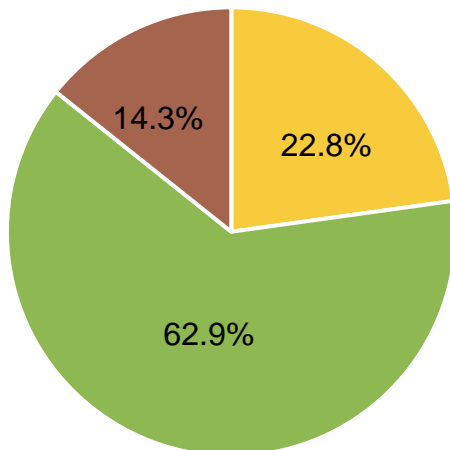


79.3 Years
Life Expectancy²

\$58,884
Median Household
Income³

37.2 Years
Median Age²

Population by Age¹



■ 0-17 ■ 18-64 ■ 65+

27.1%
Adults with Any
Disability⁴



1st
Quartile

6.2 more licensed
dentists compared to
Florida.

4th
Quartile

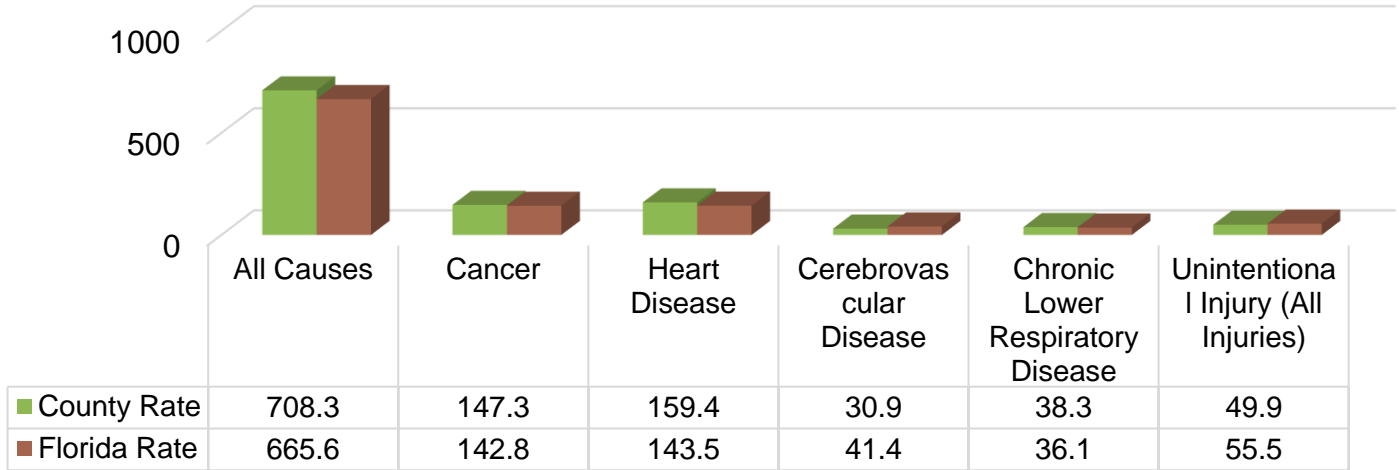
Bacterial STD cases
are 132.4 points
higher in the county.

4th
Quartile

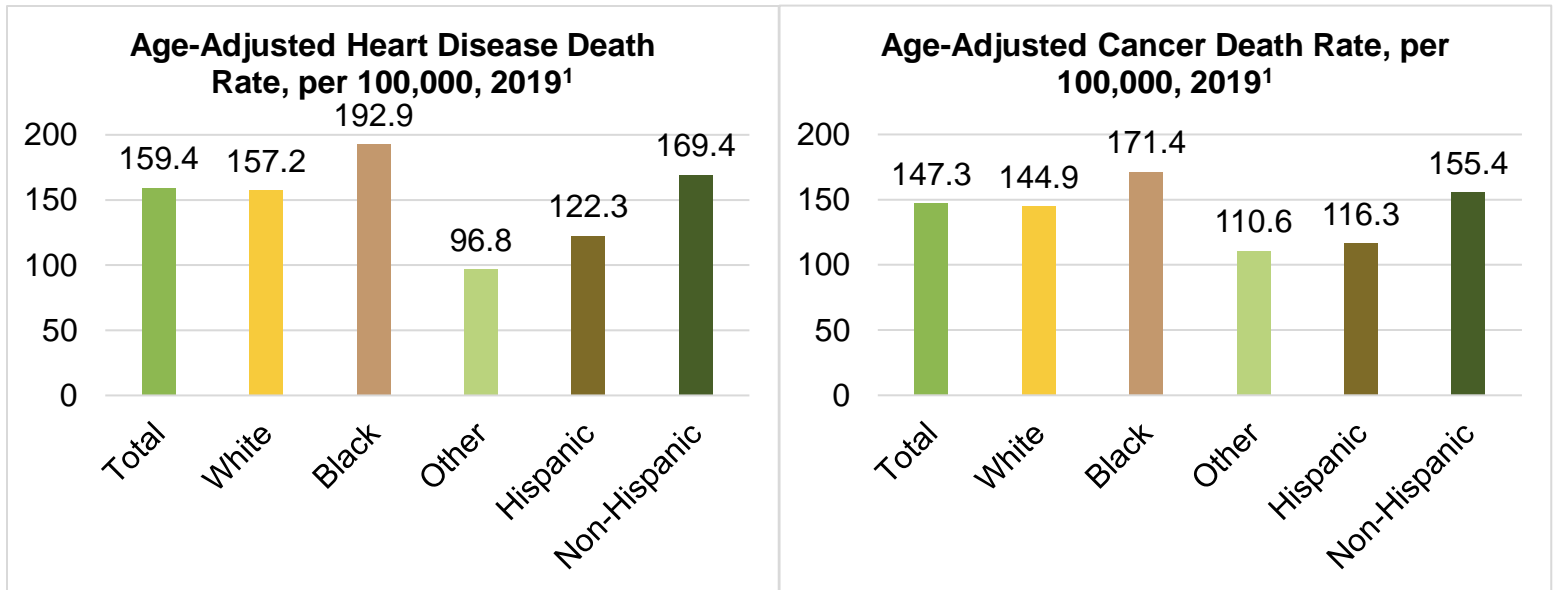
209.3 more
hospitalizations from
asthma than the state.

Health Status

Age-adjusted Rates per 100,000 Top 5 Leading Causes of Death, 2019¹



Top 2 Causes of Death



COVID-19⁵

193,819
Cases in
Hillsborough
County

785,766
Hillsborough
County Residents
Fully Vaccinated

61%
12+ Hillsborough
Population
Vaccinated

42,252 Deaths Statewide

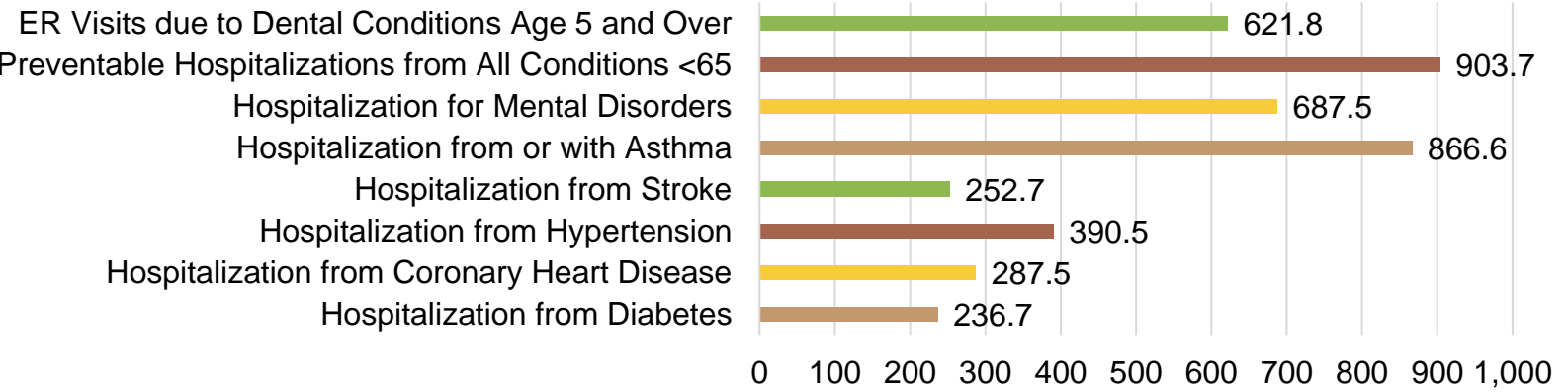
Visit [FLDOH](https://www.fl.gov/FLDOH) for the most updated COVID-19 data

The COVID-19 pandemic began in January 2020 resulting in death and disability.

Preventative efforts include social distancing, masking, and vaccination all of which continue to change and impact all aspects of life. Annual data is not available at the county level for 2020 and is best demonstrated by the most recent available data shown to the left. Data retrieved

8/22/2021. For more information on COVID-19 please visit [cdc.gov/coronavirus](https://www.cdc.gov/coronavirus)

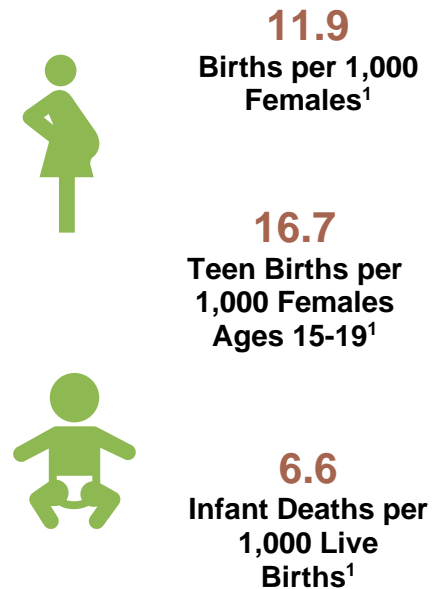
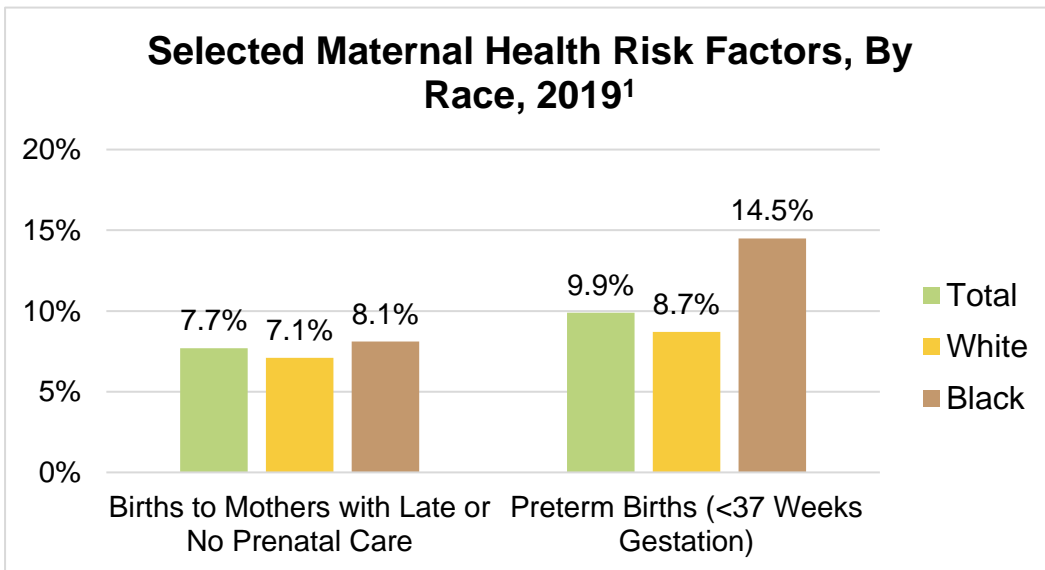
Hospitalization Rates (per 100,000)⁶



Behavioral Risk Factors (2019) ⁴	County	Florida
Adults Who Are Obese	30.2%	27%
Adults Who Are Overweight	38.6%	37.6%
Adults Who Currently Smoke	16.0%	14.8%
Adults Who Are Current E-Cigarette Users	5.7%	7.5%
Adults Who Engage in Heavy or Binge Drinking	17.1%	18%
Adults Who Are Sedentary	27.4%	26.5%
Adults Who Consumed Two or More Servings of Fruits & Vegetables Per Day	38.7%	36.7%

Behavioral risk factors estimate the prevalence of personal health behaviors that can affect morbidity and mortality. Engaging in negative behaviors can increase the likelihood of developing or worsening chronic diseases. While positive health behaviors can improve quality of life.

Maternal & Child Health



Sociodemographics



14%
Households
Receiving
Food Stamps
(SNAP)⁷



5.2%
Unemployment
Rate as of
June 2021⁸



14.6%
People Below
100% of the
Federal
Poverty Line⁹



87.5%
Households
with Access to
Broadband
Internet¹⁰

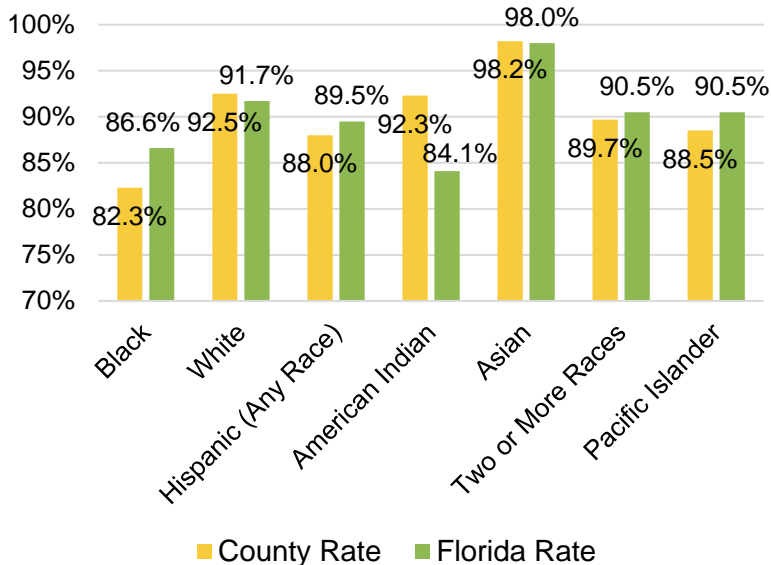
Education

4.8%
People with Less than 9th
Grade Education¹¹

21.4%
People with
Bachelors' Degree¹¹

During the 2019-2020 school year Hillsborough County has an **88.8%** high school graduation rate compared to Florida with a **90%** graduation rate.

2019-2020 High School Graduates by Race/Ethnicity Cohort¹²



Health Access

174,894
People who are Uninsured
Under Age 65

Healthcare Providers and Resources (per 100,000) ¹⁴	County	Florida
Total Licensed Providers (Fiscal Year 20-21)	402.4	314
Family Practice Physicians	18.2	19.2
Dentists	62.9	56.7
Pediatricians	27.3	21.9
Internists/Internal Medicine	55.4	47.3
OB/GYNs	13.2	9.2
Licensed Mental Health Counselors	52	53.7
Facilities ¹⁵	County	Florida
Total Hospital Beds	306.4	307.6
Total Acute Care Beds	260.9	248.9
Specialty Beds	45.5	58.6
Nursing Home Beds ¹⁶	274.3	401.9



Sources

1. Florida Department of Health, Bureau of Vital Statistics, 2019.
2. US Bureau of the Census, American Community Survey, Table B01002, 2019.
3. US Bureau of the Census, American Community Survey, Table B19013, 2019.
4. Florida Behavioral Risk Factor Surveillance System telephone survey conducted by the Centers for Disease Control and Prevention (CDC) and Florida Department of Health Division of Community Health Promotion, 2019.
5. Florida Department of Health COVID-19 Response, 8/22/2021
6. Florida Agency for Health Care Administration (AHCA), 2019.
7. US Census Bureau DP03 Selected Economic Characteristics, 2019.
8. U.S. Department of Labor, Bureau of Labor Statistics, Local Area Unemployment Statistics Program, in cooperation with the Florida Department of Economic Opportunity, Bureau of Workforce Statistics and Economic Research, 2021.
9. US Census Bureau S1701 Poverty status in the past 12 months, 2019.
10. US Census Bureau S2801 Types of Computers and Internet Subscriptions, 2019.
11. US Census Bureau DP02 Selected Social Characteristics in the United States, 2019.
12. Florida Department of Education, Education Information and Accountability Services (EIAS), 2020.
13. US Bureau of the Census, American Community Survey, Table S2701, 2019.
14. Florida Department of Health, Division of Medical Quality Assurance, 2020.
15. Florida Agency for Health Care Administration (AHCA), 2020.
16. Florida Agency for Health Care Administration (AHCA), 2019.