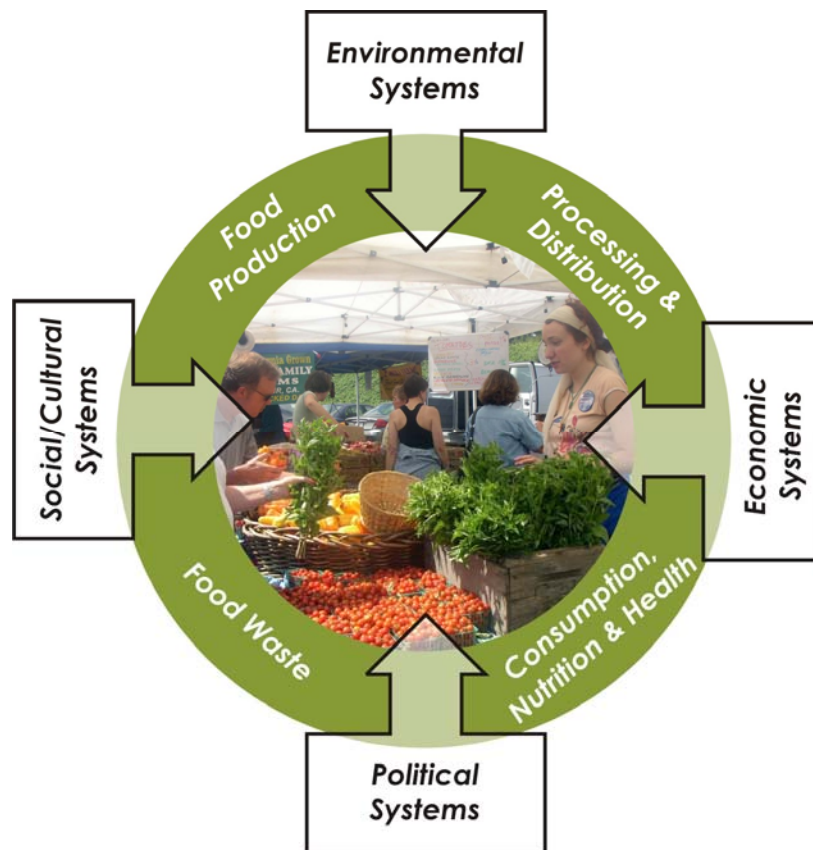


# Profile of Local Food System Manatee County



Prepared for the Manatee Food Policy Council  
May 2012

Health Council of West Central Florida



The health councils were created in 1983 by Florida Statute to identify, address and resolve health care issues of local concern. Each health council is a private, non-profit organization governed by a Board of Directors. The Board members are appointed by County Commissioners to represent the concerns of health care consumers, providers and purchasers.

The Health Council of West Central Florida, Inc. (HCWCF) serves Hardee, Highlands, Hillsborough, Manatee and Polk counties. The Council has extensive experience working with for-profit and non-profit agencies, public health organizations, consumers and professionals. Collaboration and cooperation are critical to the success of our mission.

We have three strategic goals: (1) influence the accessibility of health care and social support systems through *comprehensive health planning*; (2) provide *education* about essential community health challenges and solutions; and (3) participate as a collaborative partner to address current and emerging health issues to develop and sustain efficient and cost effective *service delivery* systems.

#### **BOARD OF DIRECTORS**

Nancy Callahan, Hillsborough  
Ray Dielman, Manatee (Chair)  
Nick Galvez, Hillsborough  
Susan Longo, Hillsborough  
Carole Mackey, Hillsborough  
James Wesley Nall, Polk  
Russell Patterson, Hillsborough  
Carl X. Walters, Polk

#### **TO LEARN MORE ABOUT THE HEALTH COUNCIL**

Visit our website - [www.healthcouncils.org](http://www.healthcouncils.org)

Or Contact Us:

Health Council of West Central Florida, Inc.

9600 Koger Blvd., Suite 221

St. Petersburg, FL 33702

727-217-7070

727-570-3033 (Fax)

Elizabeth Rugg, Executive Director

Kathey LaRoche, Business Development and Planning Director

Teresa Kelly, Special Projects Coordinator

## Table of Contents

	<u>Page #</u>
I. INTRODUCTION	1
II. FARMLANDS AND PRODUCTION	1
III. SALES, PROCESSING, DISTRIBUTION AND EXPORTS	2
IV. ACCESS TO FOOD	5
A. Retail Stores	5
B. Household Spending on Food	5
C. Community Supported Agriculture	7
D. Community Gardens	7
E. Emergency and Supplemental Food Resources	9
1. Food Banks and Pantries	9
2. Congregate Dining Facilities	9
3. Home Delivered Meals	10
4. USDA/TEFAP Food Commodities	10
5. Supplemental Food and Nutrition Program (SNAP)	11
6. School Breakfast, Lunch and Summer Food Programs	11
7. Women, Infants and Children (WIC)	11
F. Restaurants	12
V. FOOD INSECURITY	12
VI. FOOD DESERTS	13
VII. FOOD WASTE	15
VIII. FOOD SAFETY	16
IX. EDUCATION	17

## List of Tables

Table 1: Income and Median Age Manatee County and Florida, 2011	1
Table 2: Licensed Agricultural Dealers by Commodity, Manatee County, 2012	3
Table 3: Agricultural Businesses in Manatee County, 2012	4
Table 4: Number of Retail Food, Distributors, Processors, Warehouse and Storage Facilities, Manatee County, 2012	6
Table 5: Average Household Expenditures on Food at Home, Manatee County and Florida, 2011	7
Table 6: SNAP Recipients, Manatee County, July 2008-June 2009	11
Table 7: Number and Percent PK-12 Students Eligible for Free/Reduced Price Lunches, Manatee County, 2000-02 and 2009-2010	11
Table 8: Food Waste in Manatee Landfill in 2005, 2007, and 2009	15

## List of Figures

Figure 1-Bradenton Area Food Desert	14
Figure 2: Ellenton Area Food Desert	14

## PROFILE OF THE LOCAL FOOD SYSTEM

### I. INTRODUCTION

Manatee County is located in the west central region of Florida along the Gulf of Mexico. Containing 741 square miles, Manatee County is the 18th most densely populated county in Florida out of 67 counties.

The 2011 population estimate for Manatee County is 324,056. Overall, Manatee County has seen its population increase 22% since 2000, which is greater than the statewide growth of 18% during the same period.

Manatee County is also impacted by seasonal and non-permanent residents such as farmworkers. In 2008, the Manatee County Chamber of Commerce estimated a seasonal population equal to 14% of the permanent population. In 2002, which is the most recent data available, an additional 18,000 farmworkers and their families were estimated to live in Manatee County at least part of the year.

The majority of the population resides in the unincorporated portions of the county, which has also seen the greatest growth since 2000. The cities of Bradenton and Palmetto represent the next most populous areas of the county, with several beach communities (Anna Maria, Bradenton Beach, Holmes Beach, and Long Boat Key) representing the remaining incorporated cities.

Table 1: Income and Median Age Manatee County and Florida, 2011

2011 Estimates	Manatee County	Florida
Median Income	43,099	44,062
Average Household Income	63,159	61,676
Per capita income	27,053	25,024
Median Age	45.9	40.9

Source: ESRI Business Solutions, 2012

Data used in this profile is drawn from a variety of sources that may use different collection techniques, calculation methodologies, and time periods so it is best to look at the data as a whole and not make determinations based on individual indicators.

### II. FARM LANDS AND PRODUCTION

In 2007 approximately 55% of lands were devoted to agriculture in Manatee County. Currently, less than 50% of County lands are designated for agriculture. The Manatee County Farm Bureau estimates that over 10,000 acres of farm land are being lost each year.

Maintaining agricultural lands makes economic sense. A study done in neighboring Hillsborough County indicated that for every dollar generated through property taxes on residential use, the county spent \$1.29 in services. For every dollar of property tax revenue generated for agricultural use, only .25 was spent in services. These ratios are comparable to national averages.

Manatee County ranks 6th in Florida and 93rd in the nation in value of its agricultural products. Vegetable crop production includes tomatoes (40% of Florida's production) with over 12,000 acres grown annually. Potatoes, cabbage, watermelons, peppers, cucumbers, snap beans and strawberries account for an additional 14,000 acres.

Citrus production includes over 2 million trees on 18,548 acres. Fruit is primarily produced for processing into juice or concentrate. Early and mid-season oranges account for 55% of the crop. Late season Valencia oranges total 41% and the remaining 4% consists of grapefruit, tangerines and tangelos. Citrus by-products, including peels, are made into cattle feed, oils, essences and flavors.

In addition, Manatee County has over 200,000 acres for livestock (beef and dairy cattle). Estimates include over 53,000 head of beef cattle, and 3,000 head of dairy cattle. Beef cattle generate over \$18 million annually.

Feed production includes over 7,000 acres of hay and 2,500 acres of silage.

Agriculture is a significant contributor to the economy in the County. The value of products sold from aquaculture and commercial fishing is estimated at \$5,000,000; and the total output of the agricultural industry in 2007 was \$1.8 billion which was 11% of total County output. Every \$1 increase in farm output led to an additional 37 cents in economic activity in other sectors of the economy.

### III. SALES, PROCESSING, DISTRIBUTION AND EXPORTS

Agricultural products produced in Manatee County are brought to local, regional, national and international markets. In 2007, food processing output was \$1.2 billion. The farm sector contributed \$260 million in added value to the local economy in 2007, and food processing contributed \$440 million in added value.

Agricultural dealers are licensed by the state of Florida to engage in the business of obtaining agricultural products from producers for sale or resale of agricultural products or to act as a broker between producers and buyers. Licensed agricultural dealers in Manatee County are indicated in Table 2.

**Table 2: Licensed Agricultural Dealers by Commodity,  
Manatee County, 2012**

DBA Name	City	Commodity
C & D Fruit & Vegetable Company, Inc.	Bradenton	Fruits and Vegetables
C & E Farms, Inc.	Parrish	Fruits and Vegetables
Can-Am Pepper Company, Lp	Bradenton	Watermelon
Can-Am Pepper Company, Lp	Bradenton	Fruits and Vegetables
Chipico South	Palmetto	Fruits and Vegetables
Cole Tomato Sales, Inc.	Parrish	Fruits and Vegetables
Dams & Son Brokerage, Inc.	Parrish	Fruits and Vegetables
Esformes Properties, Inc.	Palmetto	Fruits and Vegetables
Esformes Properties, Inc.	Palmetto	Grain and Field Crops
Fresh Quest, Inc.	Palmetto	Fruits and Vegetables
Greg Molis Produce, Inc.	Bradenton	Fruits and Vegetables
Harllee Packing, Inc.	Palmetto	Fruits and Vegetables
Heyer, Steven	Palmetto	Fruits and Vegetables
JBK Distributors, Inc.	Bradenton	Fruits and Vegetables
MR Farms	Bradenton	Fruits and Vegetables
Pacific Tomato Growers, Ltd.	Palmetto	Grain and Field Crops
Pacific Tomato Growers, Ltd.	Palmetto	Fruits and Vegetables
Specialty Tomatoes, Inc.	Bradenton	Fruits and Vegetables
Robert Tambone Marketing	Bradenton	Fruits and Vegetables
Sanzone Brokerage, Inc.	Ellenton	Fruits and Vegetables
Scherer, David H.	Palmetto	Fruits and Vegetables
SMP Marketing, Llc	Bradenton	Watermelon
SMR Farms	Bradenton	Livestock
Southeast Tomato Distributors	Palmetto	Fruits and Vegetables
Sysco West Coast Florida, Inc.	Palmetto	Fruits and Vegetables
Sysco West Coast Florida, Inc.	Palmetto	Watermelon
Sysco West Coast Florida, Inc.	Palmetto	Eggs, Milk
Taylor & Fulton Packing Llc	Palmetto	Fruits and Vegetables

DBA Name	City	Commodity
West Coast Tomato, Llc	Palmetto	Fruits and Vegetables
Woody's Tomato Corporation	Palmetto	Fruits and Vegetables

Source: Florida Department of Agriculture and Consumer Services [www.florida-agriculture.com](http://www.florida-agriculture.com), accessed April 2012

Other agricultural businesses including processors, shippers, wholesalers and retailers, packers, livestock brokers and exporters are located in Manatee County and are listed in Table 3.

**Table 3: Agricultural Businesses in Manatee County, 2012**

Agricultural Business	Exporter	Exporter EU certified	Livestock Broker	Packer/ Re-packer	Processor	Producer	Retailer	Shipper	Wholesaler	Commodity type	Processes
A.P. Bell Fish Company, Inc	X	X							X	Fish	Fresh
Bay Shellfish Company						X			X	Shellfish	Frozen
C & D Fruit and Vegetable				X		X		X		Field Crops Fruit Vegetables	Fresh
Dakin Dairy Farm					X					Dairy	Fresh
Florida Worldwide Citrus Products Group Inc	X							X		Fruit Specialty Products	Value-added
Horne's Fresh Fish							X			Fish	None
Island Fresh Market							X			Fish	None
Mixon Fruit Farms				X	X	X	X	X	X	Fruits	None
Pacific Tomato Growers				X		X		X		Vegetables	None
Star Fish Company							X		X	Fish Shellfish	None
Strickland Ranch and Exporters	X		X							Cattle	

Source: Florida Department of Agriculture and Consumer Services; [www.florida-agriculture.com](http://www.florida-agriculture.com), accessed April 2012



## IV. ACCESS TO FOOD

Access to food is dependent on several factors; income, cost of food, transportation, and locale. For the average consumer, food is generally purchased through retail stores, farmers markets and roadside stands, vending machines, and many types of restaurants.

Programs such as the Supplemental Food and Nutrition Program (SNAP) and Women, Infants and Children (WIC) provide a means to supplement the purchase of nutritious foods.

Food is also provided through free and reduced price school breakfast and lunch programs and emergency food sources such as food banks, soup kitchens and other programs for low income and other special needs populations.

Consumers may also grow or raise food for their own consumption, or obtain food direct from farms.

### A. Retail Stores

The store type and format impacts the variety, cost and hours of operation of retail food outlets. Definitions from the Progressive Grocer's 2005 Marketing Guidebook and the North American Industry Classification system of the US Census Bureau are listed below to illustrate the differences. Store ownership is generally classified as either chain (11 or more stores) or independent (fewer than 11 stores).

Types of Food Stores:

Convenience Store - Any self-service grocery store offering limited line of high-convenience items including ready-to-heat and ready-to-eat foods. Open long hours and provides easy access. The majority sell gasoline.

Fruit and Vegetable Markets - Retailing fresh fruits and vegetables. Includes farmer's markets and produce stands, both permanent and temporary.

Grocery Store - Any retail store selling a line of dry grocery, canned goods or nonfood items plus some perishable items.

Meat/Seafood Markets - Any store retailing fresh, frozen, or cured meats, fish and seafood.

Other Specialty Food - Primarily engaged in retailing miscellaneous specialty foods not for immediate consumption and not made on the premises. Examples include spices, coffee and tea, gourmet, ethnic, confectionary and nuts, and health food stores.

Supermarket - Any full-line self-service of groceries, meat, and produce. These stores typically carry approximately 15,000 items; offer a service deli and frequently a service bakery.

Super Centers - A supermarket with at least 30,000 sq. ft., generating \$12 million or more annually and offering an expanded selection of non-food items. Specialty departments and extensive services are offered.

Wholesale Club - A membership retail/wholesale hybrid with a varied selection and limited variety of products presented in a warehouse-type environment. These 120,000 square-foot stores have 60% to 70% general merchandise and a grocery line dedicated to large sizes and bulk sales. Memberships include both business accounts and consumer groups, e.g., Sam’s Club, Costco, and BJ’s.

Table 4 lists the number of retail food, distributors, processors, warehouses and storage facilities in Manatee County.

**Table 4: Number of Retail Food, Distributors, Processors, Warehouse and Storage Facilities, Manatee County, 2012**

Establishments Requiring Inspection	Number
<b>Retail Food</b>	
Convenience Store	20
Convenience with Limited Food	91
Convenience Store w/Significant Food Service	64
Convenience Store Limited Sales	2
Supermarkets	39
Grocery Stores	12
Farmer’s Markets	4
Salvage Food Store	1
Meat Market	3
Seafood Market	15
Specialty Food	24
Specialty Limited Sales	1
Health Food Store	13
Health Food Store w/Limited Food Service	5
Retail Bakery w/Food Service	7
Retail Bakery	6
Bakery Outlet	3
Bakery Limited Sales	2
Minor Outlet w/Perishables	82
Minor Outlet with w/Limited Food Service	6
Minor Outlet with w/Significant Food Service	7
Minor Food Outlet w/ Only Non-Perishable Foods	70
Minor Outlet Limited Sales	18

Distributors/Processors/Wholesales	
Major Food Distributor	5
Warehouse/Distribution Limited Sale	1
Cold Storage	8
Dry Storage	14
Fish (Whole, Gut, Fillet)	3
Seafood Processor Limited Sales	1
Other Perishable Processing	6
Other Hermetically Pack Foods	1
Wholesale Bakery	6
Confections Processor/Retailer	5
Honey Processor	1
Coffee/Tea Processor	1
Other Nonperishable Processor	2
Packaged Ice Plant and Self Vending	2
Bottled Water Plant	1

Source: Florida Department of Agriculture and Consumer Services, Division of Food Safety, May, 2012

A map indicating the location of food outlets can be found at the following link: <http://batchgeo.com/map/86230c11a240f28cbb01f8372cd18406>.

## B. Household Spending on Food

An estimate of the annual average amount of money spent on food eaten at home in Manatee County, by category, appears in Table 5.

Table 5: Average Household Expenditures on Food at Home, Manatee County and Florida, 2011

Type of Food	Manatee	Florida
All food at home	\$4,079.13	\$4,007.25
Bakery and cereal	544.05	532.31
Meat, poultry, fish and eggs	943.06	929.06
Dairy products	452.75	444.06
Fruits and Vegetables	723.00	704.28
Snacks and other food	1,416.27	1397.53
Non-alcoholic beverages	397.03	392.59

Source: ESRI business Solutions, 2012

## C. Community Supported Agriculture

Over the last 20 years, Community Supported Agriculture (CSA) has become a popular way for consumers to buy local, seasonal food directly from a farmer. Individuals become members by purchasing a "share" and receive weekly distributions during the growing season. Members are essentially

partners in the farm and share in both the benefits of the harvest and the risk of crop failure. Farmers benefit from payments early in the season which assists with cash flow for planting, and members benefit from a diverse stream of fresh produce throughout the growing season.

Manatee County has two CSA options. Gamble Creek Farm in Parrish has been in business for five years and Geraldson Farms in Bradenton has been serving the community for six years.

Over 30 varieties of crops are grown using a combination of conventional hydroponics and certified organic field production. Members receive about two grocery bags full of vegetables each week. The farm also offers pick-your-own opportunities throughout the season and a limited farm stand open to non-members. Unclaimed shares are donated to the Manatee County Food Bank each week. Both farms report a drop in membership recently as a result of tougher economic times.

#### D. Community Gardens

Community Gardens have a variety of configurations. Gardens grow flowers, fruits and vegetables. They can be one community plot or many individual plots. They can be at a school, hospital, or in a neighborhood. A community garden can also be a series of plots dedicated to "urban agriculture" where the produce is grown for a market or distributed to participants.

According to the American Community Garden Association the benefits of community gardens include:

- Improve the quality of life for people in the garden
- Provide a catalyst for neighborhood and community development
- Stimulate social interaction
- Encourage self-reliance
- Beautify neighborhoods
- Produce nutritious food
- Reduce family food budgets
- Conserve resources
- Create opportunity for recreation, exercise, therapy, and education
- Reduce crime
- Preserve green space
- Create income opportunities and economic development
- Reduce city heat from streets and parking lots
- Provide opportunities for intergenerational and cross-cultural connections

Community gardens are not currently an element of the food system in Manatee County but represent an area for expansion.

## E. Emergency and Supplemental Food Resources

Food banks and pantries, adult congregate dining facilities, home delivered meals and food commodities help meet the needs of hungry citizens in Manatee County. Many of these sources are not open or operating in the evening or on weekends.

### 1. Food Banks and Pantries

The Food Bank of Manatee County supplies food to over 70 agencies and churches throughout the county. Operating hours vary. In 2011, The Food Bank distributed 3.4 million pounds of food - enough for approximately 2.6 million meals.

### 2. Congregate Dining Centers

The Friendship Dining Program invites those 60 and older who are seeking companionship, activities and nutritious meals. The centers are conveniently located throughout Manatee County and the days of the week and hours of operation may vary by site, in some instances, transportation can also be provided. The meals provide for 1/3 of the Recommended Daily Allowance (RDA) and are approved by a registered dietician. Breakfast is also offered in some locations, along with lunch, to provide 2/3rd of the daily nutritional needs for the average senior.

Guests are invited to participate in any or all of the following services provided at these centers:

- Recreational activities including films, field trips, art and music
- Holiday celebrations
- Card games, bingo, creative projects, and more

Locations:

- Woodwinds Friendship Dining Center, Bradenton
- Palmetto Gayle Friendship Dining Center, Palmetto
- Palmetto Elks Friendship Dining Center, Bradenton
- Bayshore Windmill Village Friendship Dining Center, Bradenton
- Journey Friendship Dining Center, Bradenton
- Westside Friendship Dining Center, Bradenton
- Westminster Friendship Dining Center, Bradenton
- Faith Friendship Dining Center, Bradenton

### 3. Home Delivered Meals

Meals on Wheels Plus provides 10,550 meals per month to those who meet one or more of the following guidelines:

- 60 plus years of age
- Disabled, 18-59 years of age and referred by the Department of Children and Families
- Homebound
- Caring for someone who is homebound
- Recently discharged from the hospital
- Insufficient nutritional intake
- Unable to prepare meals

Meals provide 1/3 of the Recommended Daily Allowance (RDA) and are approved by a registered dietician. Pureed meals are available for individuals who have special needs.

### 4. USDA/TEFAP Food Commodities

Under The Emergency Food Assistance Program (TEFAP), commodity foods are made available by the U.S. Department of Agriculture to States. States provide the food to selected local agencies such as food banks, which distribute the food to soup kitchens and food pantries that directly serve the public. The Food Bank of Manatee coordinates this program that provides food to 39 sites. Emergency food baskets totaling 179,393 lbs of food and FEMA baskets of food totaling 857 lbs were distributed in Manatee County in 2011.

### 5. Supplemental Food and Nutrition Program (SNAP)

Participating households receive monthly benefit allotments in the form of electronic debit cards (also known as EBT, or electronic benefit transfer). SNAP benefits are limited to the purchase of food items for use at home as well as seeds and plants to produce food. SNAP benefits are used at supermarkets, large and small grocery stores, convenience and specialty stores, and farmers markets. Benefits can be exchanged only at authorized food retailers.

SNAP increases food expenditures and improves nutrient availability. SNAP participants spend more on food than they would in the absence of the program, and SNAP helps low income families more easily afford other things such as rent and transportation.

In addition, there is evidence that program participation can increase the availability of some nutrients in the home food supply. Recent studies have shown that the nutrient intake of low-income people differs little from higher-income people—a sharp contrast from 40 years ago.

SNAP has an added benefit of serving as an economic multiplier, meaning it puts critical dollars back into local economies. Every \$1 in new SNAP benefits generates up to \$1.80 in economic activity.

**Table 6: SNAP Recipients, Manatee County, July 2008-June 2009**

Area	# Families	# of Persons	% of Population	\$ Value of Benefits
Manatee	2,500	5,089	2	1,199,007
Florida	1,465,182	2,822,816	15	2,478,354,544

Source: Florida Statistical Abstract, 2009

## 6. School Breakfast, Lunch and Summer Food Programs

Each year, the United States Department of Agriculture publishes income guidelines for program eligibility that factor household income and size in relation to federal poverty guidelines. In 2010-11, for instance, a student from a four-person household in Florida with annual household income less than \$28,665 was eligible for free lunches.

In 2010-11, 53.8% of Manatee County students (23,800) were eligible for free or reduced price lunches in schools. An average of 34,000 meals are served each day in 53 schools (34 elementary, 11 middle, 8 high).

**Table 7: Number and Percent PK-12 Students Eligible for Free/Reduced Price Lunches, Manatee County, 2000-02 and 2009-2010**

School Year	2000-02	2009-2010	% Change
Total # Students	36,557	42,838	17.0 %
# Eligible	13,514	22,248	65%
% Eligible	36.97	51.81	14.86

Source: Florida Department of Education: Free and Reduced Price Lunch Eligibility <http://www.fldoe.org/eias/eiaspubs/pubstudent.asp>; accessed January 2012

## 7. Women, Infants and Children (WIC)

WIC provides supplemental foods, healthcare referrals, nutrition education, and breastfeeding promotion and support to low-income pregnant, breastfeeding, and postpartum women, and to infants and children up to age five who are found to be at nutritional risk.

An estimated 9,930 Manatee residents are eligible for WIC in fiscal year 2012. The average WIC enrollment in Manatee County was 7,948 per month from September 2011 through January 2012, for a 78.6%. In fiscal year 2011, the WIC participation rate was 80%.

## F. Restaurants

As of 2011, there were 909 facilities subject to inspection by the Department of Business and Professional Regulation in Manatee County. These facilities include restaurants of all types, food carts, catering halls, cafeterias, and concessions. Over 100 (104) facilities are associated with national chains that are commonly referred to as “fast food”.

The average household in Manatee County spends slightly less on restaurant food than households in other parts of Florida; i.e. \$2,887.02 vs. \$2,888.16 respectively.

## V. FOOD INSECURITY

Households are considered food insecure when a lack of financial resources prevents them from meeting their basic food needs at all times.

Food security includes at a minimum:

- The ready availability of nutritionally adequate and safe foods
- Assured ability to acquire acceptable foods in socially acceptable ways (that is, without resorting to emergency food supplies, scavenging, stealing, or other coping strategies)

Food insecurity has been measured since 1995 using the Food Security Supplement to the Census Bureau’s Current Population Survey. Established income and food assistance programs help to provide a safety net for many low-income families.

According to Yale University’s Rudd Center for Food Policy & Obesity, low-income areas have fewer supermarkets and groceries that carry healthy foods than do predominantly white, middle- and high-income neighborhoods. Stores in low-income neighborhoods stock fewer healthy items and have significantly lower-quality fresh produce. When available, the cost of fresh foods in low-income areas is often prohibitive.

Although related, food insecurity and poverty are not the same. Unemployment rather than poverty is a stronger predictor of food insecurity.

Nine states exhibited statistically significant higher household food insecurity rates than the U.S. national average in 2009. Florida ranked 7<sup>th</sup> with an estimated 17.1 % of the population experiencing food insecurity compared with 16.6% nationwide. Children in Florida have even higher rates of food insecurity, with 27.5% Florida children experiencing food insecurity compared with 23.2% nationwide.



In Manatee County the child food insecurity rate is higher than Florida at 29.9% or 19,650 children. Manatee has slightly higher rates of food insecure adults when compared to Florida at 17.2% or 53,700 people.

Not all food insecure individuals qualify for federal nutrition programs and must rely on charitable assistance. When assessed by income, 61% of persons in Manatee County below 200% of the federal poverty level are estimated to be food insecure and 39% over 200% of poverty are food insecure.

Cost of food is another factor in food insecurity. The average cost of a meal in Manatee County is estimated at \$2.63 which is slightly higher than Florida at \$2.62 and is higher than the national average of \$2.54.

## VI. FOOD DESERTS

The USDA defines a food desert as: An area where at least 20 percent of the people are at or below the federal poverty levels for family size, or where median family income for the tract is at or below 80 percent of the surrounding area’s median family income. Tracts qualify as ‘low access’ tracts if at least 500 persons or 33 percent of the population live more than a mile from a supermarket or large grocery store (for rural census tracts, the distance is more than 10 miles). Manatee County has two designated food deserts, one in Bradenton and one near Ellenton. Table 7 provides information on the two identified food deserts.

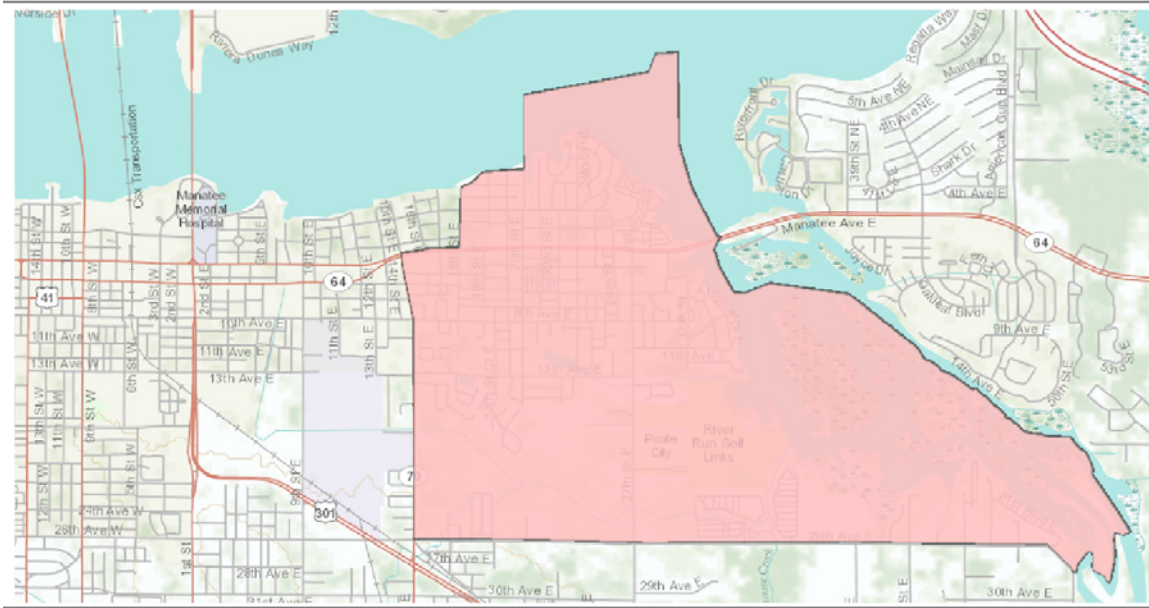
Table 7: Food Desert Indicators, Manatee County, 2009

Indicators	Bradenton		Ellenton	
	#	%	#	%
Total Population	8,995	100	4,487	100
# With Low Access	1,649	18.3	795	17.7
# With Low Income and Low Access	210	2.4	41	0.9
# Children 0-17 With Low Access	247	2.7	209	4.7
# 65+ With Low Access	660	7.3	92	2.1
# Housing Units Without Vehicle and Low Access	29	0.9	2	0.1

Source: USDA Food Desert Locator; <http://www.ers.usda.gov/Data/FoodDesert/>

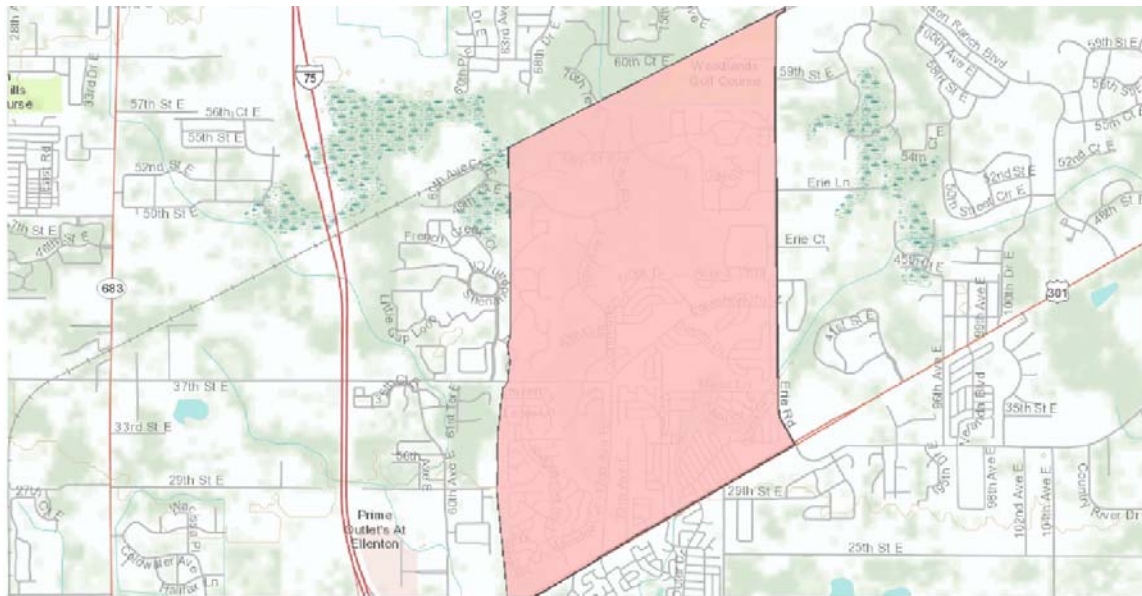
Figures 1 and 2 illustrate the food desert areas in Manatee County.

Figure 1-Bradenton Area Food Desert



Source: USDA Food Desert Locator, [www.ers.usda.gov/data-products/food-desert-locator.aspx](http://www.ers.usda.gov/data-products/food-desert-locator.aspx)

Figure 2: Ellenton Area Food Desert



Source: USDA Food Desert Locator, [www.ers.usda.gov/data-products/food-desert-locator.aspx](http://www.ers.usda.gov/data-products/food-desert-locator.aspx)

## VII. FOOD WASTE

Food waste recycling is a crucial step to complete the cycle of a food system. Nutrients can be recycled back into the system by being composted, fed to animals, or used to produce energy in biodigesters, rather than being lost to landfills.

It is estimated that up to half of the produce raised will be culled for aesthetic reasons. Farm Share works with farmers throughout Florida and the Eastern United States to recover nutritious fresh fruits and vegetables (in bulk lots of 20,000+ pounds) considered unsuitable for the retail market due to size or minor blemishes. In addition, Farm Share works with packers, workers, wholesalers and grocers to divert food that has been rejected in the retail sector due to minor imperfections. Farm Share then arranges deliveries to participating nonprofit organizations. All recovered produce is distributed to qualifying low-income families and charitable organizations feeding those in need at no charge.

Farm Share not only helps needy people, but also provides a valuable service to farmers by assisting in disposing of produce not marketable at the retail level. This saves the farmers the added expense of disposal fees and related labor costs. In addition, field productivity is increased, sales are potentially increased as a result of product exposure, and food is donated and distributed to needy people without interfering with normal marketing channels.

Currently there is no large scale composting operation in Manatee County. Individual farms may take advantage of composting as part of their operations and may sell manure or other compost, but food waste most likely ends up in the landfill.

The Lena Road landfill operated by Manatee County government is a Class 1 facility. Class 1 facilities receive general, non-hazardous household, commercial, industrial, and agricultural wastes, subject to some federal restrictions. Landfill information is presented in Table 8.

**Table 8: Food Waste in Manatee Landfill in 2005, 2007, and 2009**

	<b>2005</b>	<b>2007</b>	<b>2009</b>
Total Tons of Land Filled	274,726	330,773	276,486
Total Pounds per Capita per Day	8.10	9.70	7.09
Percent Food Waste	5%	6%	7%

Source: Florida Department of Environmental Protection, Solid Waste Facility Reports; [www.dep.state.fl.us](http://www.dep.state.fl.us), accessed May 2012.

## VIII. FOOD SAFETY

Food safety is a major public health concern. Food-borne illnesses cost Floridians nearly \$10 billion a year in medical and other losses, according to a food safety analysis by the Produce Safety Project, an initiative of the Pew Charitable Trusts.

Most reported food borne outbreaks are the result of improper food handling during preparation, including cross contamination and improper washing of produce, or are the result of storing food at inappropriate temperatures.

The state ranks fourth in the nation in total costs for food borne illness and second in cost per case. Costs related to food-borne illness are broken down as follows:

- Medical costs: \$727 million
- Quality of life losses: \$6 billion
- Lost life expectancy: \$3.08 billion
- Total cost: \$9.8 billion
- Cost per case: \$1,984 (nationwide average \$1,850)

Responsibility for food safety occurs at all levels of government. The US Department of Agriculture and the Food and Drug Administration have most of the responsibility for food safety at the federal level.

In Florida, the Department of Agriculture and Consumer Services Division of Food Safety is the primary agency charged with assuring food safety. The division is comprised of four bureaus: Bureau of Food and Meat Inspection, Bureau of Food Laboratories, Bureau of Chemical Residue Laboratories, and Bureau of Dairy Industry. The Division is assisted by an Administrative Support Section, a Compliance Monitoring Section, and a Methods Development/Data Evaluation Section.

Inspection of food establishments is divided between six agencies. Food inspections in hospitals and nursing homes are the responsibility of the Agency for Health Care Administration (AHCA).

Food inspections in childcare facilities, group treatment homes, and youth half-way houses are the responsibility of the Department of Children and Families (DCF), although some residential group care institutions are inspected by the Agency for Persons with Disabilities.

The Department of Health maintains responsibility for inspections of abuse shelters that operate or provide kitchen services, bars and lounges, civic and fraternal organizations, detention facilities, residential and day care facilities for adults, family foster homes, Meals on Wheels, migrant labor camps, movie

theaters, recreational camps, schools, culinary schools, temporary events, and any food service located on premises of a DOH-licensed facility (including vending machines).

Facilities inspected and regulated by the Department of Business and Professional Regulation include bars located in hotels, caterers, yacht and country clubs, convenience stores, make-and-take establishments, mobile units, restaurants, dinner and drive-in theaters, and vending machines.

Most grocery and convenience stores, outlet stores, water and ice vending machines, and processing facilities are inspected and regulated by the Department of Agriculture and Consumer Services.

## IX. EDUCATION

Agriculture education in Manatee County occurs in nine chapters of Future Farmers of America in affiliated middle and high schools. In addition approximately 25 4-H clubs exist in Manatee County to offer education in food and nutrition, beef, swine, horses and goats, poultry, and rabbits.

Manatee Technical Institute offers a 1200 hour culinary arts and commercial food training program that provides students with a solid grounding in basic techniques and classic methods of culinary arts. Students also learn the financial aspects of the business by participating in catering, servicing and sales.

The Manatee County Agriculture and Extension Service offers training and technical assistance in agriculture, fisheries, food safety and nutrition to residents of the county.

## ACKNOWLEDGEMENTS

The Manatee County Food Policy Council consists of stakeholders from diverse food-related sectors and exists to examine the local food system and identify ideas and recommendations for improvement through changes in policy.

The Health Council of West Central Florida and our implementing partner, the Manatee County Health Department, invite interested parties to participate in the Council's activities. Stakeholders may include:

- Processors
- Distributors
- Retailers
- Health Providers
- Consumers
- Education
- Restaurants
- Institutional Food Services
- Hunger Prevention Advocates
- County/City/State Government
- Growers/Ranchers/Commercial Fishing
- Agriculture and Natural Resources

## MEMBERS

Walt Anderson -Sysco, Inc.

Jody Baden - New Medicine Community at Health Park East

Dr. Jennifer Bencie - Manatee County Health Department

Chef Garry Colpitts C.E.C. - Manatee Technical Institute Culinary Arts Program

Dr. Marina D'Abreau - University of Florida IFAS Extension

Lillian Elliot - PepsiCo

Dr. Tom Felke - Florida Gulf Coast University Department of Social Work

Sandra Ford - Food and Nutrition Services, Manatee County Schools

Tim Henning - District Manager, Publix

Shelby King - King Family Farm and Market

Megan Jourdan - Manatee County Health Department

Steve Lezman - Government Affairs Manager, PepsiCo

Mary Murray - The Fresh Market

Marissa Sheldon - Manatee County Health Department

Blane Turpin - Meals on Wheels Plus

## SPECIAL THANKS TO

Dr. Tom Felke- Florida Gulf Coast University Department of Social Work

Sandra Ford, Food and Nutrition Services, Manatee County Schools

David Pickup, Manatee County Utilities

Elizabeth Salimbene, WIC Program Director, Manatee County Department of Health

Blane Turpin, Meals on Wheels Plus

Barbara Will, Environmental Health Services Division, Manatee County Department of Health